

Gulf of Mexico Fishery Management Council



**The Commons at Rivergate
3018 North U.S. Highway 301
Suite 1000
Tampa, Florida 33619-2272
<http://www.gulfcouncil.org>**

Gulf of Mexico Fishery Management Council



- Five states
- 1,631 miles of coast/186,200 nm² EEZ
- 69 species in 6 FMPs and
- 330 species in the Coral FMP

- Approximately 700 species harvested
(state and federal waters combined)

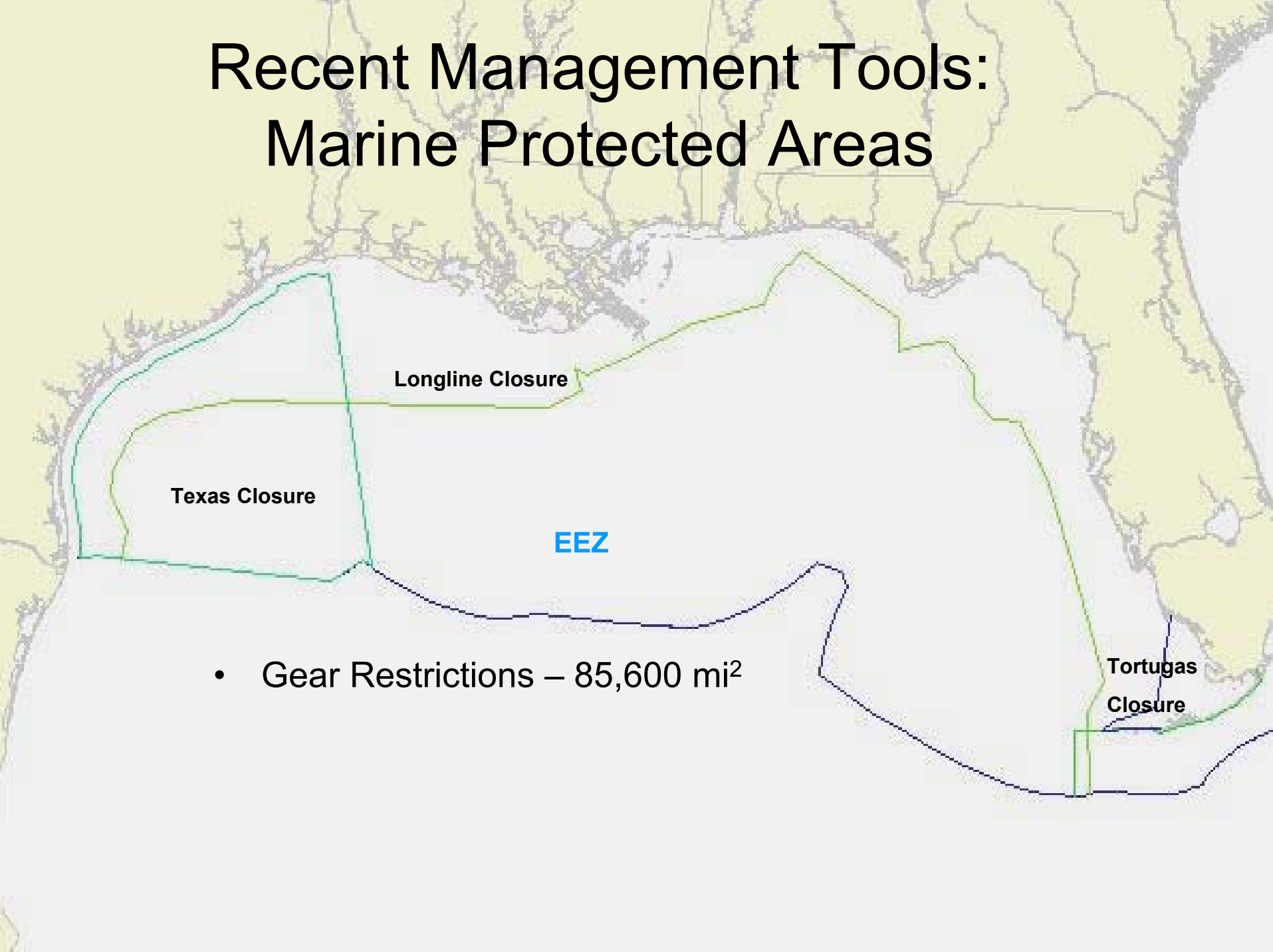
- Economic value
 - \$800 million commercial dockside
 - \$8.1 billion recreational expenditures

Physical Environment

A map of the Gulf of Mexico and the surrounding United States coastline. The land is shown in a light yellow color, and the water is light blue. The map highlights the extensive coastline of the Gulf of Mexico, including the Florida peninsula and the Gulf Coast of the United States.

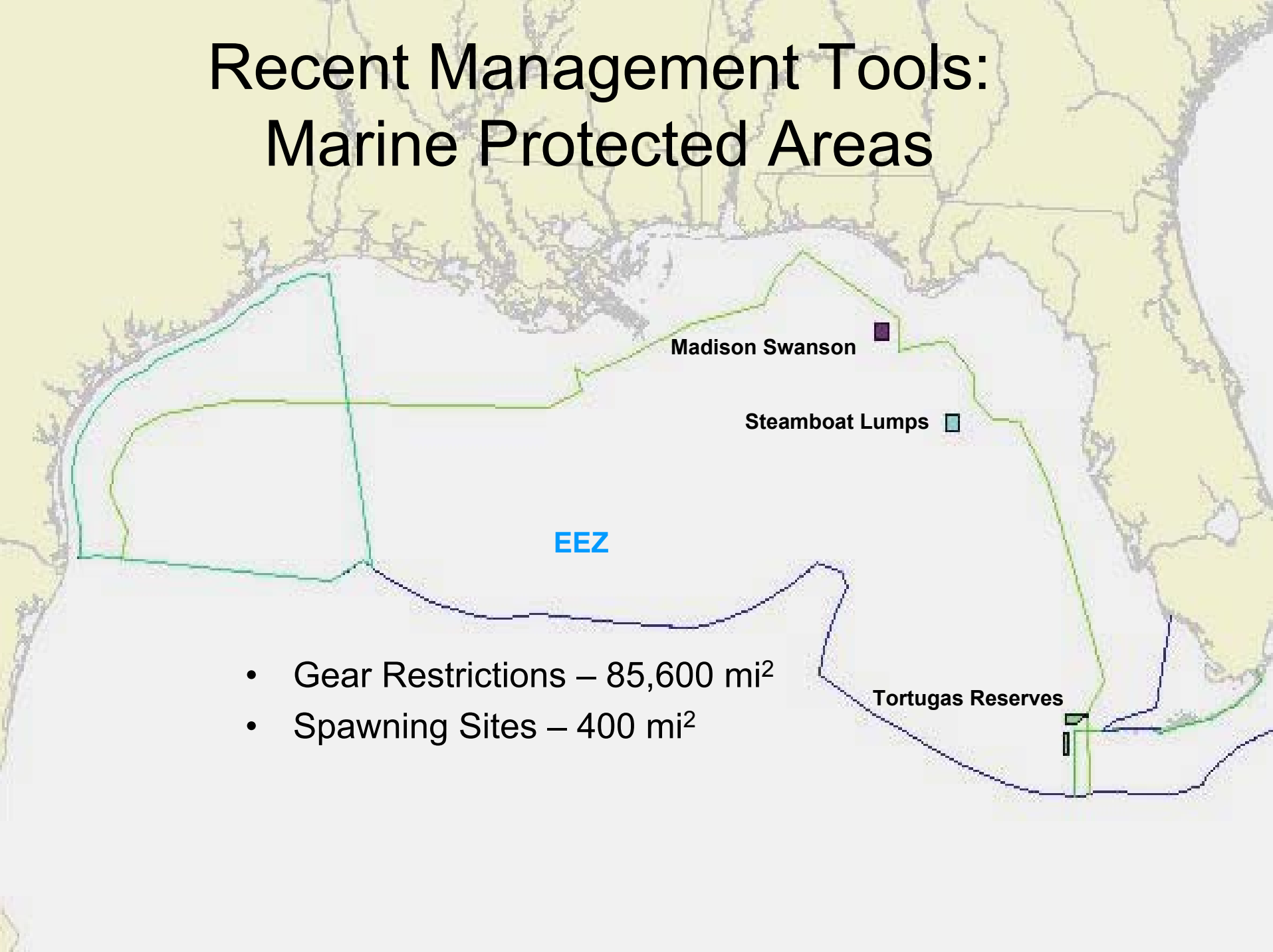
- Temperate to tropical ecosystems
- Half of all wetlands in the US
- 3,900 square miles of seagrasses
- Broad shelves 124 mi. wide
- Mississippi River
- Coral reefs

Recent Management Tools: Marine Protected Areas



- Gear Restrictions – 85,600 mi²

Recent Management Tools: Marine Protected Areas



- Gear Restrictions – 85,600 mi²
- Spawning Sites – 400 mi²

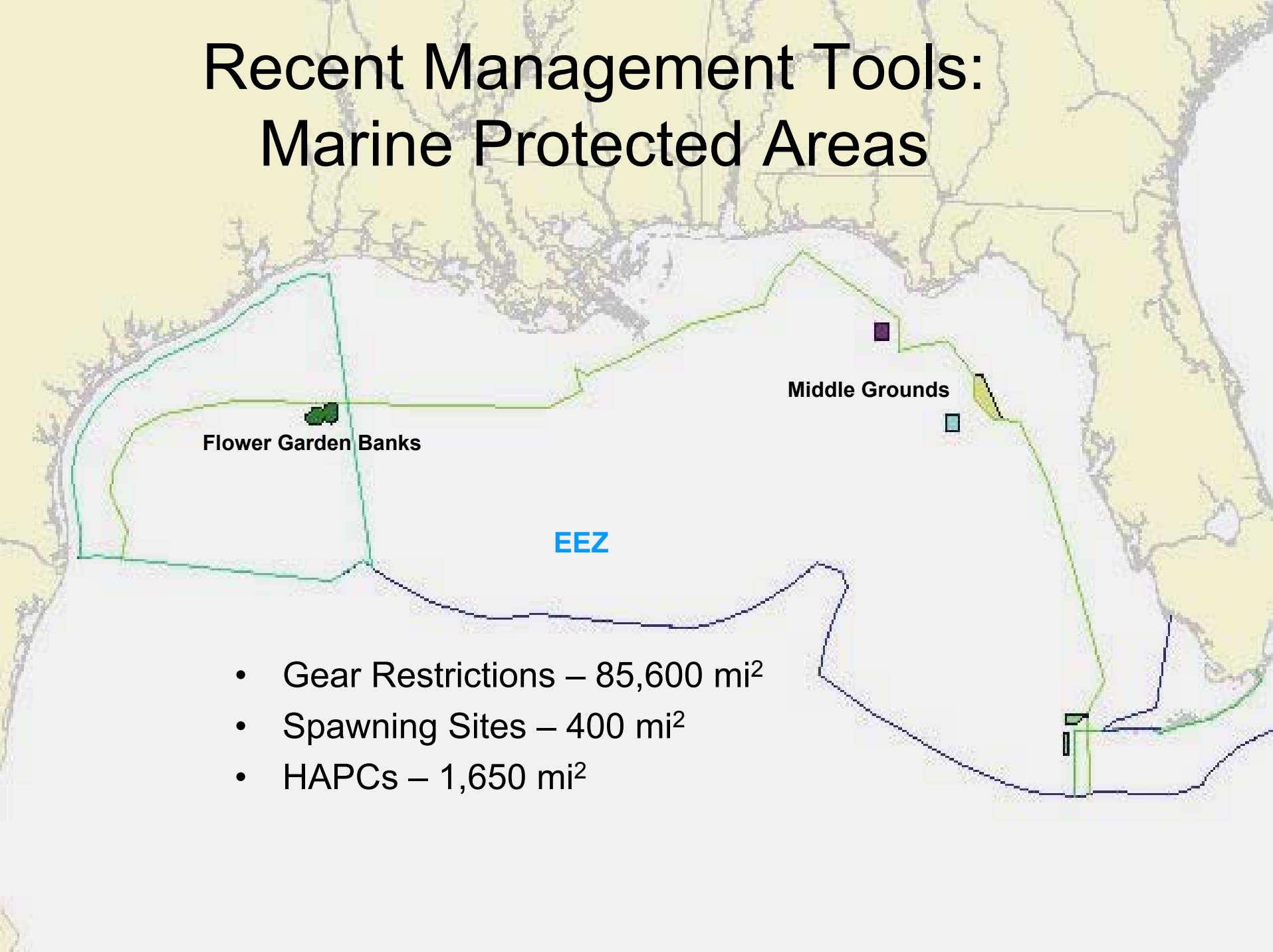
Madison Swanson

Steamboat Lumps

Tortugas Reserves

EEZ

Recent Management Tools: Marine Protected Areas



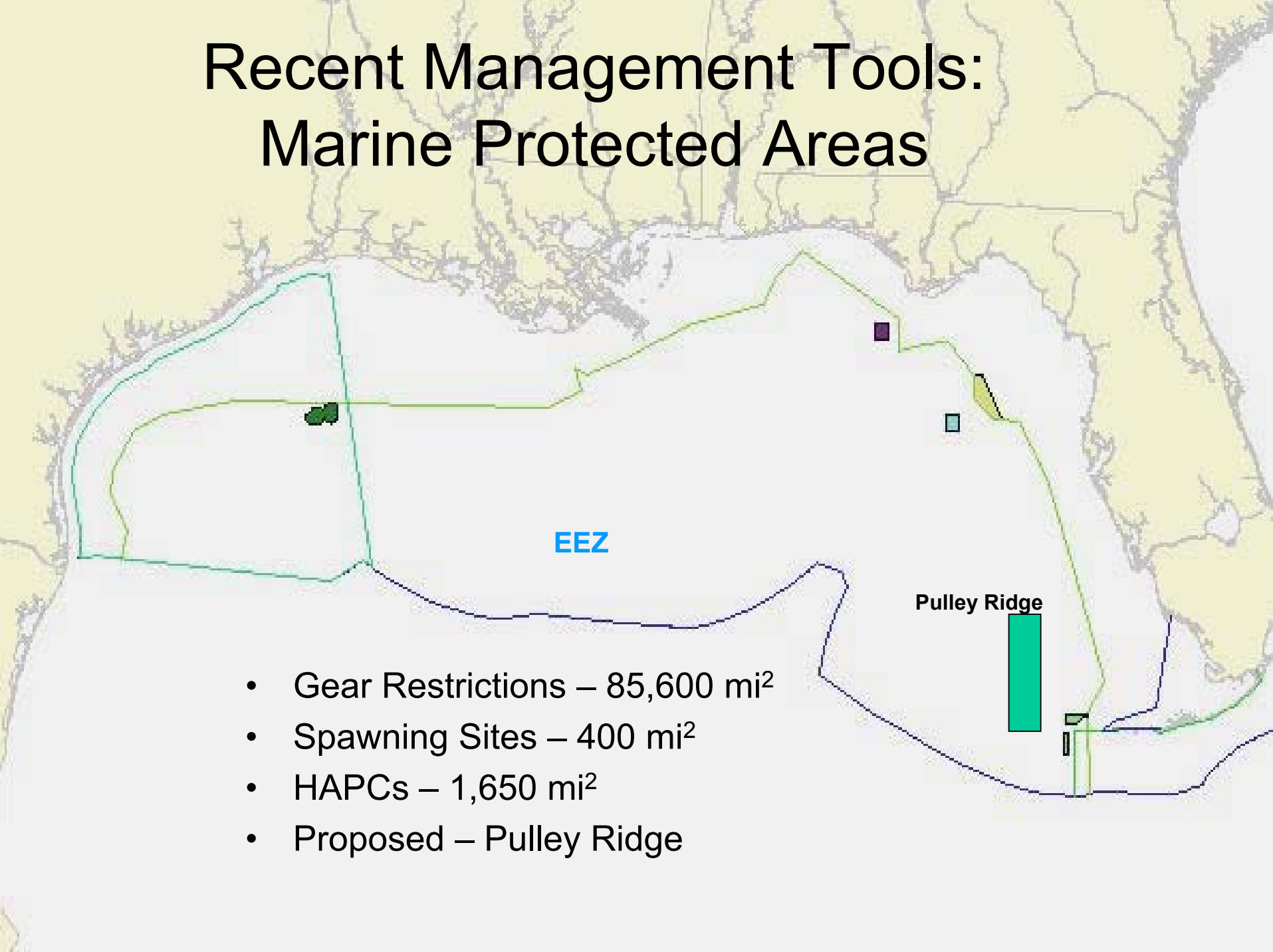
Flower Garden Banks

Middle Grounds

EEZ

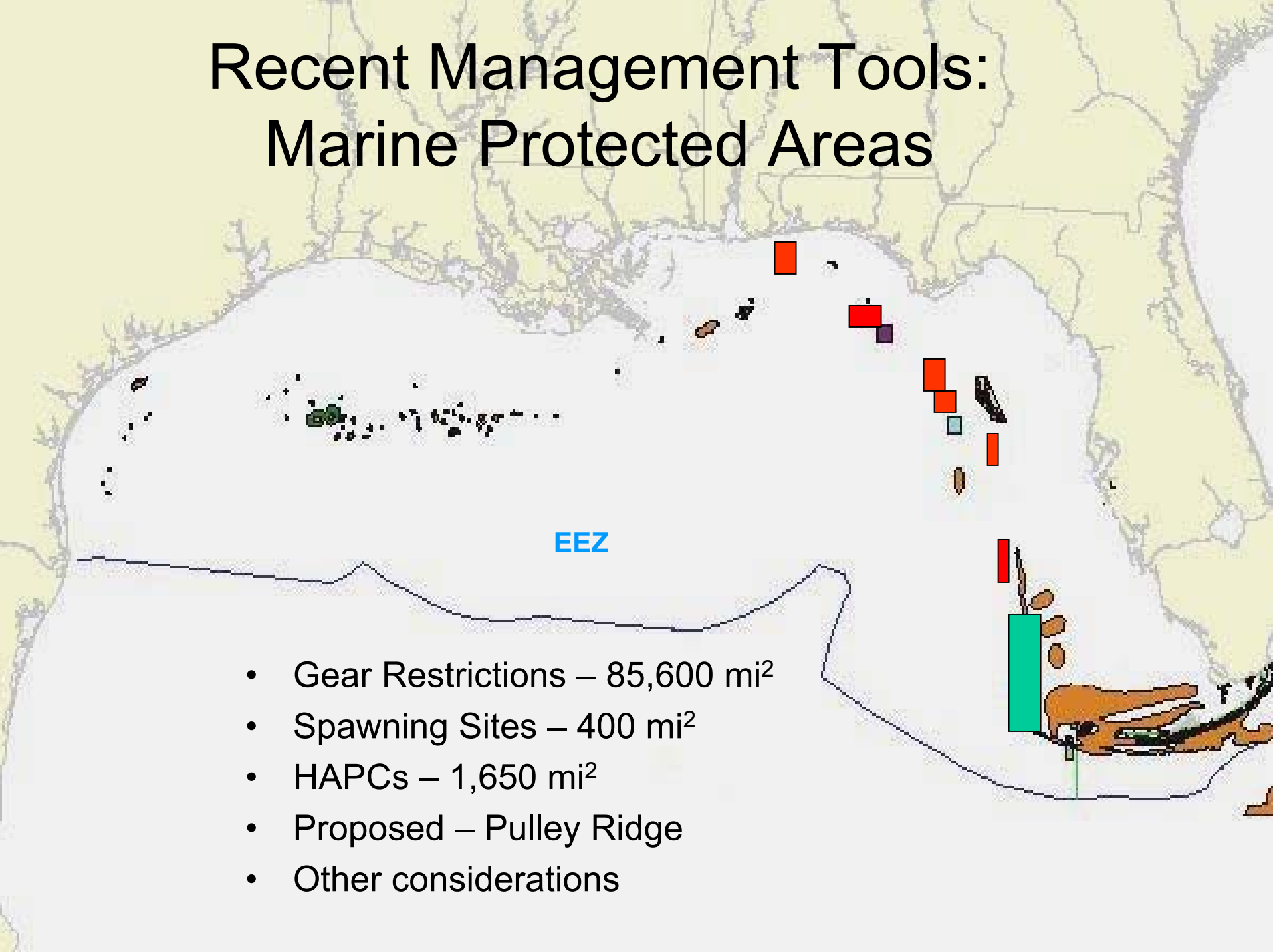
- Gear Restrictions – 85,600 mi²
- Spawning Sites – 400 mi²
- HAPCs – 1,650 mi²

Recent Management Tools: Marine Protected Areas



- Gear Restrictions – 85,600 mi²
- Spawning Sites – 400 mi²
- HAPCs – 1,650 mi²
- Proposed – Pulley Ridge

Recent Management Tools: Marine Protected Areas



- Gear Restrictions – 85,600 mi²
- Spawning Sites – 400 mi²
- HAPCs – 1,650 mi²
- Proposed – Pulley Ridge
- Other considerations

A light-colored map of the Gulf of Mexico coastline, showing the outlines of the United States and Mexico. The map is faded and serves as a background for the text.

Future Directions Being Considered

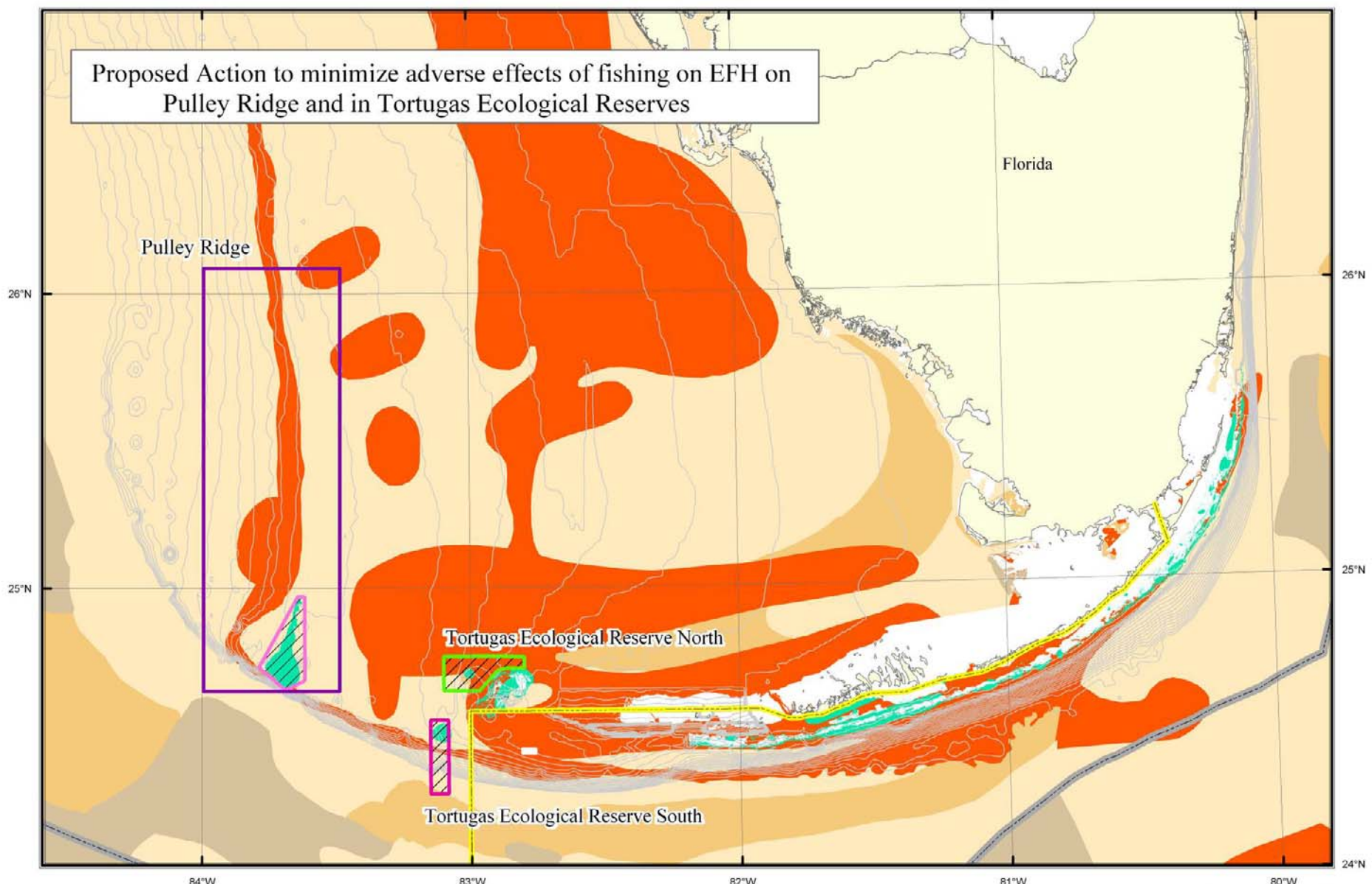
- Ecosystem management
- SEDAR Process to improve assessments
- Continue use of traditional management tools (size limits, bag limits, trip limits, quotas)
- Review the use of IFQ programs
- Consider additional HAPCs and MPAs
- Develop additional strategies to reduce bycatch and bycatch mortality

NEW MPAs & CORAL PROTECTION

- **HAPC's Established Regulating Gear: 1/05**
- **Pulley's Ridge** – Northern-most and deepest pristine area with coral characteristic of the Caribbean Sea.
- **Stetson Bank, McGrail Bank, and East and West Flower Garden Banks** - Deep water pinnacles off of Texas/Louisiana shelf.

84°W 83°W 82°W 81°W 80°W

Proposed Action to minimize adverse effects of fishing on EFH on Pulley Ridge and in Tortugas Ecological Reserves



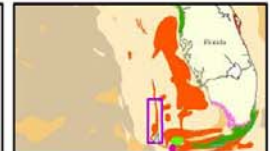
84°W 83°W 82°W 81°W 80°W

Substrate and Habitat Type	Silt	Pulley Ridge	EEZ
Coral	Clay	Tortugas Ecological Reserve North	Intercounty Boundary
Hard Bottom	Unknown	Tortugas Ecological Reserve South	Land
Sand		Area with Fishing Restrictions	GPM Bathymetry

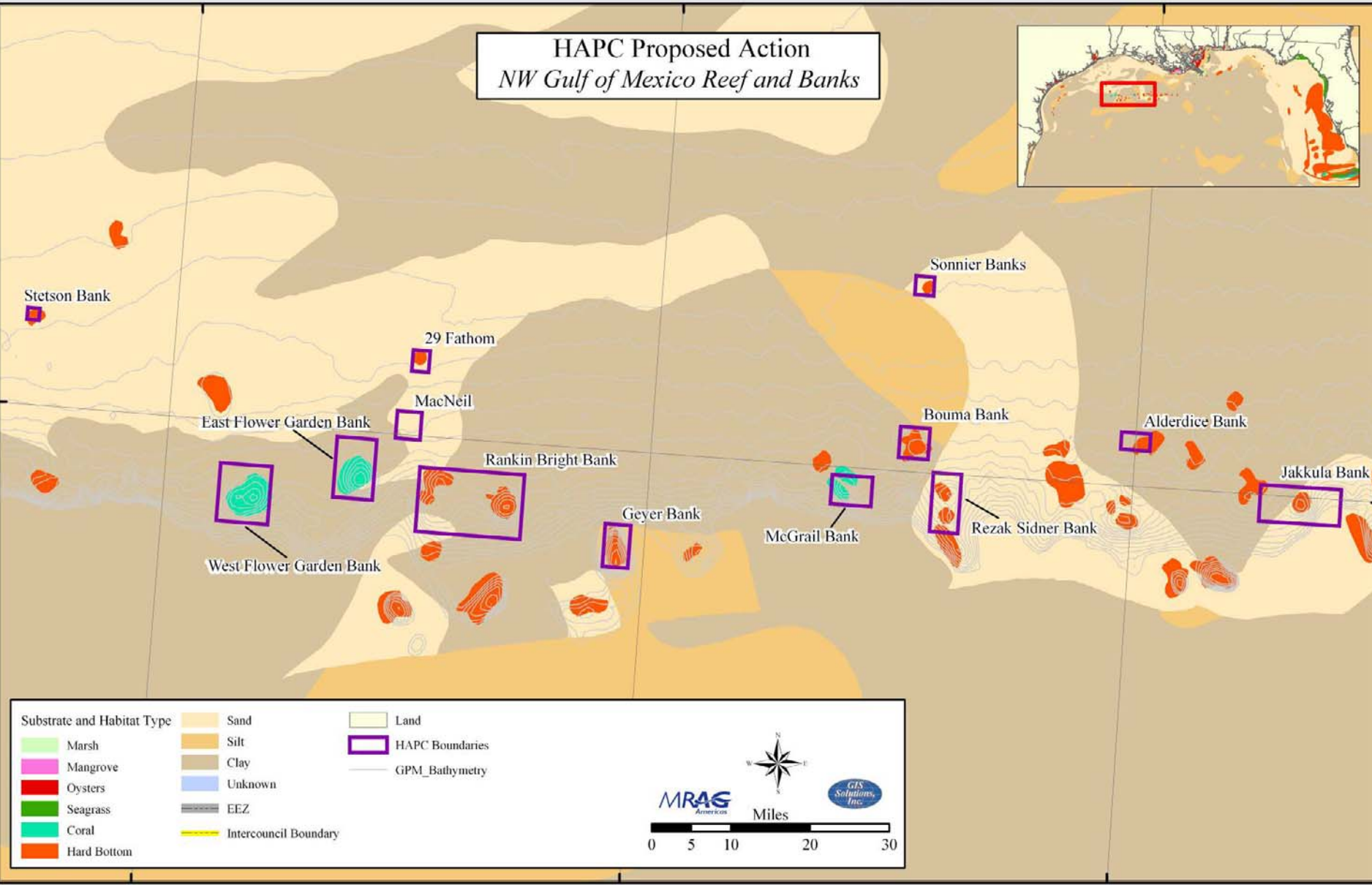
MRAG Americas

GIS Solutions, Inc.

Miles
0 4.5 9 18 27



HAPC Proposed Action NW Gulf of Mexico Reef and Banks



Substrate and Habitat Type	Sand	Land
Marsh	Silt	HAPC Boundaries
Mangrove	Clay	GPM_Bathymetry
Oysters	Unknown	
Seagrass	EEZ	
Coral	Intercouncil Boundary	
Hard Bottom		

Miles

MRAG America

GIS Solutions Inc.

94°W

93°W

92°W

Proposed Action to Minimize adverse effects of fishing on EFH in the Western Gulf



Stetson

East Flower Garden Bank

McGrail

West Flower Garden Bank

Substrate and Habitat Type

- Coral
- Hard Bottom
- Sand
- Silt
- Clay
- Unknown
- GPM_bathymetry

- EEZ
- Intercouncil Boundary

- Land
- Area With Fishing Restrictions

MRAG
America



GIS
Solutions
Inc.

Miles



94°W

93°W

92°W